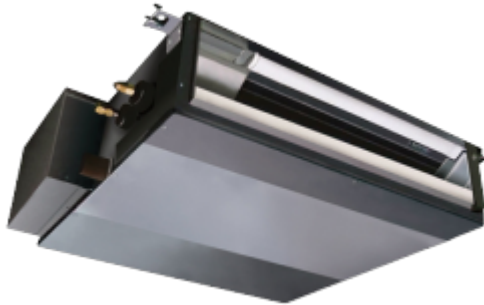


A ceiling-concealed heat pump (air conditioner) SEZ-K-VA

Air-to-air heat pumps of the SEZ-KD series are almost unnoticeable, because indoor units are installed into channels under the ceiling.



Heat installed almost unnoticeably

Air-to-air heat pumps of the SEZ-KD series are almost unnoticeable, because indoor units are installed into channels under the ceiling. Only an air intake grille and air outlet openings remain visible, therefore, the interior of the premises is not defaced. Compact indoor units occupy little space and can be installed in the premises with low ceilings. This is an excellent choice for the home, when you do not want or it is not possible to install wall-mounted heat pumps or heat pumps of another type.

In order to satisfy heating/cooling needs of the premises more appropriately, three fan speed settings and four static pressure levels (5, 15, 35 and 50 Pa) are available to choose from. Condensate pumps are also available to be chosen as accessories.

Combined heating/cooling and ventilation system

Ducts of a heating system can be used for ventilation of premises with a MITSUBISHI ELECTRIC LGH-RVX ducted recovery ventilator. This is an extremely comfortable system enabling efficient heating, cooling and ventilation of all the desired premises at the same time.

You can see [here](#) how such a combined heating/cooling and ventilation system operates

Indoor unit specifications

| | | |
|-----------------------------|------------------------|------------------------|
| Model | SEZ-KD35VA | SEZ-KD50VA |
| Indoor unit* | SEZ-KD35VAQ/VAL | SEZ-KD50VAQ/VAL |
| Weight (kg) | 21 | 23 |
| Dimensions (mm) | 200x990x700 | 200x990x700 |
| Airflow (m ³ /h) | 420-540-660 | 600-780-900 |
| Level of noise (dB(A)) | 23-28-33 | 29-33-36 |

*SEZ-KD-VA device operated by remote control. SEZ-KD-VAq - operated with wired control (sold separately)

Outdoor unit specifications

| | | |
|---|-------------------|-------------------|
| Model | SEZ-KD35VA | SEZ-KD50VA |
| Outdoor unit | SUZ-KA35VA | SUZ-KA50VA |
| Heating power (kW) (Nom.(Min.-Max.)) | 4,2 (1,7-5,0) | 6,4 (1,7-7,2) |
| COP | 3,61 | 3,21 |
| SCOP | 4,0 | 3,9 |
| Energy efficiency class | A+ | A |
| Nominal electric power consumption (kW) | 1,130 | 1,800 |
| Cooling power (kW) (Nom.(Min.-Max.)) | 3,5 (1,4-3,9) | 5,1 (12,3-5,6) |
| EER | 3,21 | 2,81 |
| SEER | 5,6 | 5,7 |
| Energy class heating/cooling | A+ | A+ |
| Nominal electric power consumption (kW) | 1,010 | 1,580 |
| Technical specification of outdoor units: | | |
| Weight (kg) | 35 | 54 |
| Dimensions (mm) | 550x800x285 | 880x840x330 |
| Airflow (m ³ /min) for heating/cooling | 2088/2178 | 2676/2676 |
| Level of noise (dB(A)) for heating/cooling | 50-49 | 52/52 |
| Power supply | 230V, 50Hz | 230V, 50Hz |
| Recommended fuse (A) | 10 | 20 |
| Pipe diameters (mm) | 3/8" ..1/4" | 1/2" ..1/4" |
| Maximum pipe length (m) | 20 | 30 |
| Maximum height difference between indoor / outdoor un. (m) | 12 | 30 |
| Temperature range for guaranteed cost-efficient operation (°C) | | |

| | | |
|-------------|----------------|----------------|
| For heating | -10(-15**)~+24 | -10(-15**)~+24 |
| For cooling | -10~+46 | -15~+46 |

**if installed preheating cable MAC-AUTO3-1,5